

Pattern Piece 3B Part A

Newborn Gown Back
Cut Two Pieces-one each side

Note: Pattern Piece 3B Part A needs to be attached with Pattern Piece 3B Part B **before** cutting fabric.

(1/2 in margin at bottom of page)

See tutorial on angelgownsbyanalane.com for more information about attaching pattern pieces together.

Pattern Provided By:



analanesangelapparel.org
Provo, Utah, USA

Pattern Piece 3B Part B

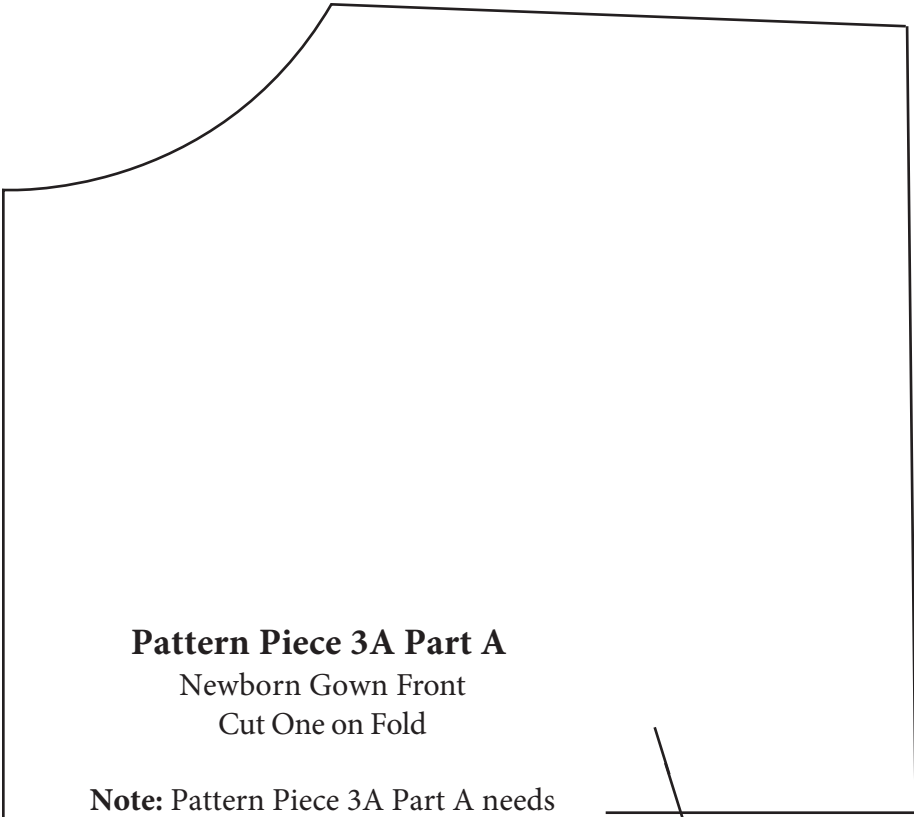
Newborn Gown Back
Cut Two Pieces-one each side

Note: Pattern Piece 3B Part B needs to be attached with Pattern Piece 3B Part A **before** cutting fabric.
(1/2 in margin at bottom of page)
See tutorial on angelgownsbyanalane.com for more information about attaching pattern pieces together.

Pattern Provided By:



analanesangelapparel.org
Provo, Utah, USA



Pattern Piece 3A Part A

Newborn Gown Front
Cut One on Fold

Note: Pattern Piece 3A Part A needs to be attached with Pattern Piece 3B Part B **before** cutting fabric. (1/2 in margin at bottom of page)
See tutorial on angelgownsbyanalane.com for more information about attaching pattern pieces together.

←
Fold Line

Pattern Provided By:



analanesangelapparel.org
Provo, Utah, USA

Pattern Piece 3A Part B

New Born Gown Front

Cut One on Fold

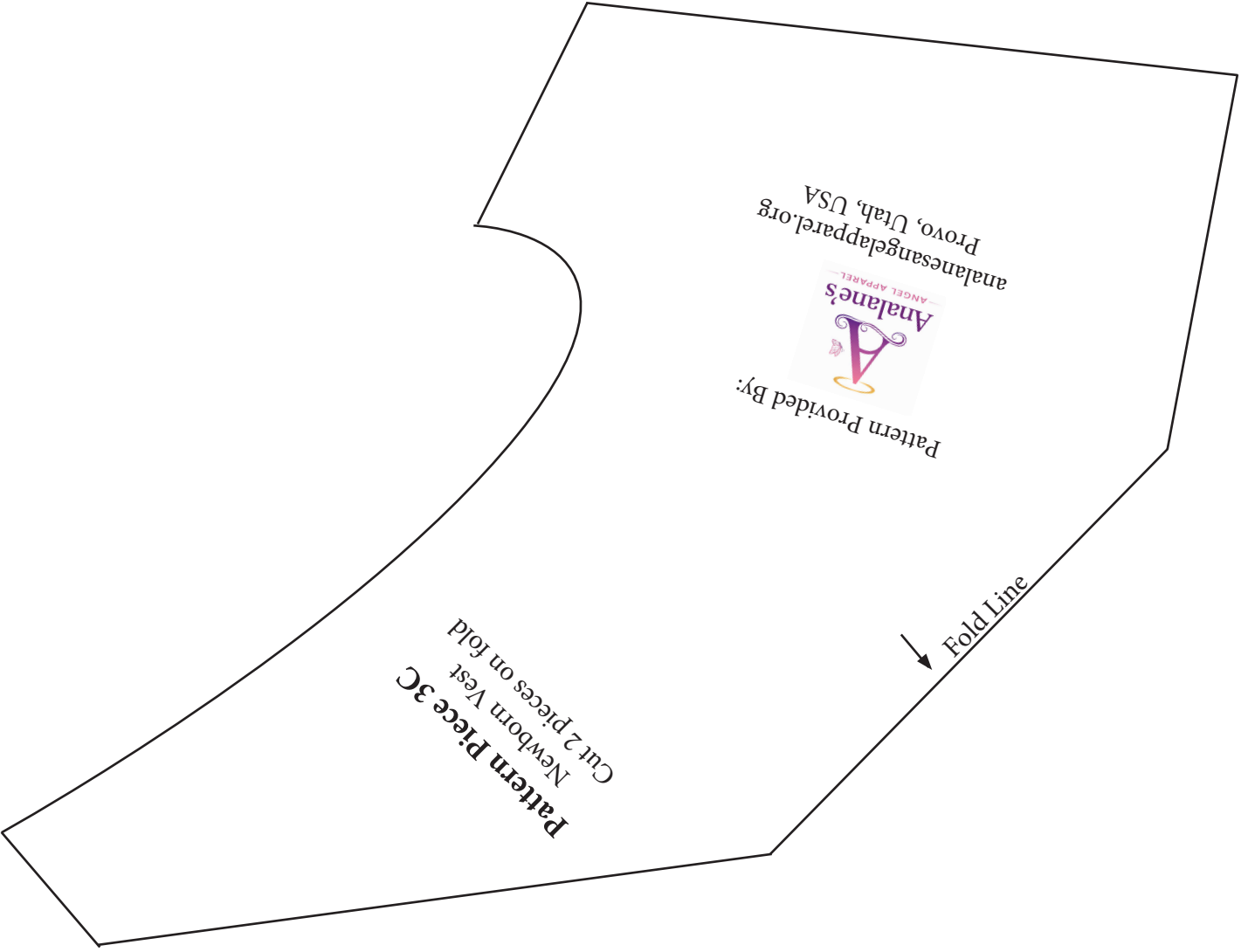
Note: Pattern Piece 3B Part B needs to be attached with
Pattern Piece 3B Part A before cutting fabric.
(1/2 in margin at bottom of page)

See tutorial on angelgownsbyanalane.com for more
information about attaching pattern pieces together.

Pattern Provided By:



analanesangelapparel.org
Provo, Utah, USA



Pattern Piece 3C
Newborn Vest
Cut 2 pieces on fold

Pattern Provided By:



anane'sangelapparel.org
Provo, Utah, USA

Fold Line