

Angel Gowns by Analane

Angel Gown Suit Sewing Instructions

Items Needed:

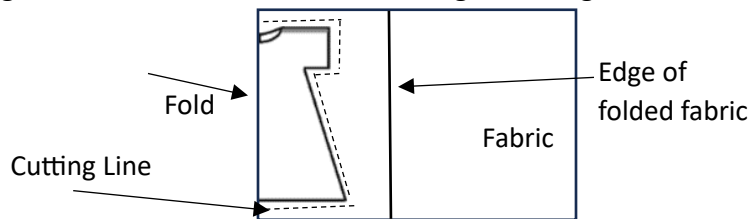
- White thread
- White fabric
- Two 8 inch long pieces of $\frac{1}{4}$ inch wide white ribbon
- One 20 in long piece of white $\frac{1}{2}$ inch white ribbon
- Two white buttons
- Sewing machine
- Straight pins
- Scissors
- Steam iron or iron & water



Step 1: Cutting Pattern Pieces (if the pieces are already cut, you may skip this step)

a. Gown Cutting Front Piece (using pattern pieces 1A, 2A, or 3A)

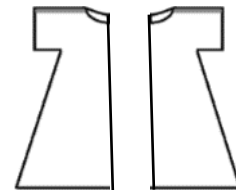
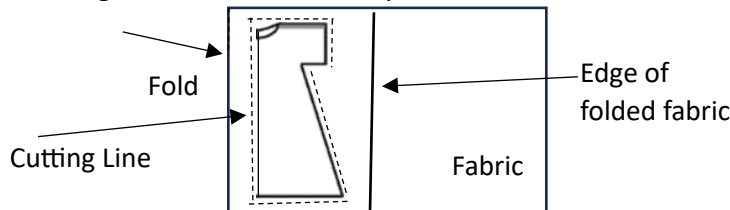
Fold the fabric with the right sides together. Place the edge of the pattern piece that says “fold line” along the fold. Cut around the other edges. Each gown needs one front piece.



Finished Cut Piece.

b. Gown Cutting Back Pieces (using pattern pieces 1B, 2B, or 3B)

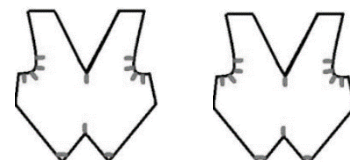
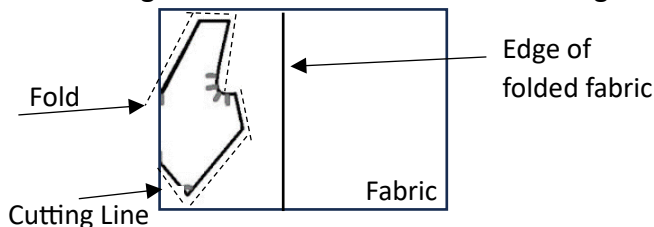
Fold the fabric, with right sides together. Place the edge of the pattern piece near fold. Cut around all edges. Each gown needs two back pieces.



Finished Cut Pieces.

c. Cutting Vest Pieces (using patterns 1C, 2C, or 3C)

Fold the fabric with the right sides together. Place the edge of the pattern piece that says “fold line” along the fold. Cut around the other edges. Each gown needs two vest pieces.



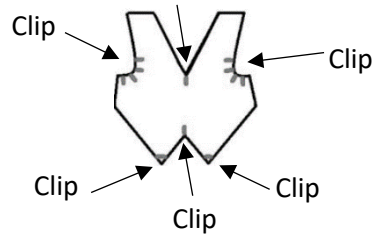
Finished Cut Pieces.

Note: Due to the curve on the vest, you may need to use scissors in that area to get the curve.

Step #2: Ironing: Make sure all pieces are ironed and there are no wrinkles.

Step # 3: Sewing the Vest

- With Right sides of the fabric together, using a $\frac{1}{4}$ inch seam, sew the two vest pieces together leaving an opening in the vest to turn it inside out.
- Clip the fabric at the curves, bottom best points, and the middle "V" points. Be careful not to clip into the stitching.



- Turn the vest right-side out.
- Using an $\frac{1}{8}$ seam allowance, top stitch the vest making sure to close the open seam.

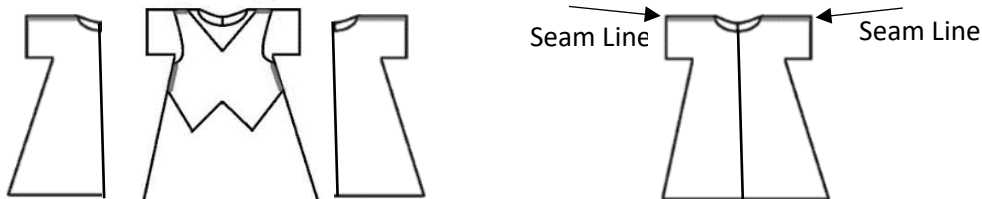
Step # 4: Positioning the Vest

Place the vest on top of the right side of the main main piece of fabric. Pin in place.



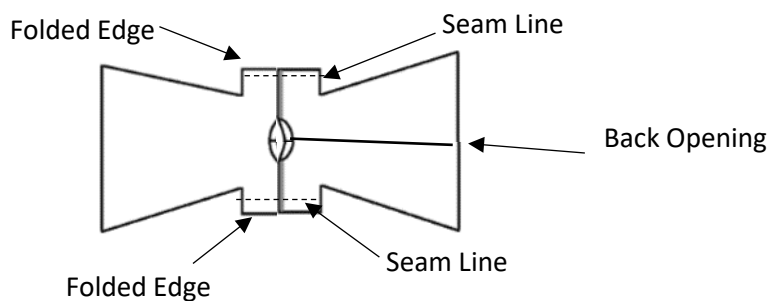
Step #5 Sewing Shoulder Seams:

With the right sides of the fabric together, pin the back pieces to the front piece matching the shoulder. Using a $\frac{1}{4}$ inch seam allowance, sew the top shoulder seam on both the right shoulder and the left shoulder.



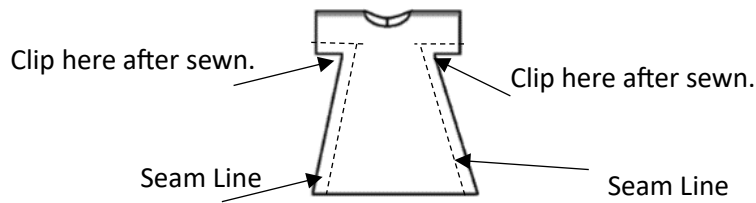
Step #6 Sewing Outer Sleeve Hem:

Lay the fabric piece open with the right side of the fabric down. Fold the outer edge of the sleeve fabric in $\frac{1}{4}$ inch. Iron the fold. Using just under a $\frac{1}{4}$ inch seam allowance sew in the sleeve hem using a straight stitch. Do this to both sleeves.



Step #7 Sewing Side Seams:

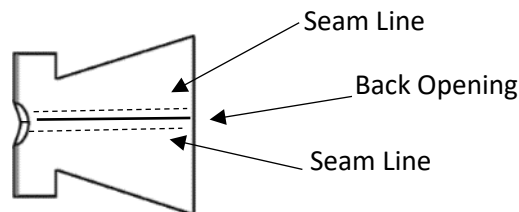
With the right sides of fabric facing each other, so the wrong side of the fabric is out, using a $\frac{1}{4}$ inch straight seam, sew the side seams of the dress starting with the bottom of the sleeve, going the end of the fabric.



After sewing the side seams, clip the fabric in the armpit area of the dress. Be careful not to cut the stitching.

Step #6 Sewing Neckline and Back Flaps

Using a zig zag stitch, stitch along the back openings and the entire neckline of the dress. After the zig zag stitch is complete, fold over the edge of the fabric about $\frac{1}{4}$ inch, and straight stitch the fabric in place.



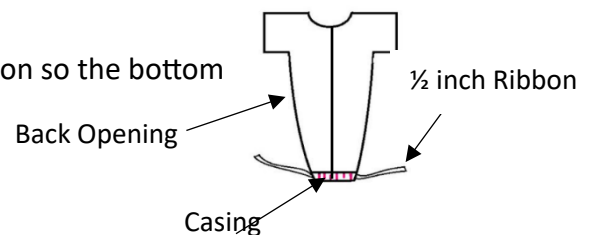
Step #7 Sewing Bottom Hem

Zig Zag the bottom of the fabric. After the zig zag stitch is complete, fold the edge of the fabric over about $\frac{1}{4}$ inch. Iron in place. Next fold the fabric again $\frac{3}{4}$ inch to hide the raw edge and straight stitch at the top of the first fold to create a casing. Note: Because of the triangle shape of the fabric, it may be necessary to ease in the fabric to make the casing.



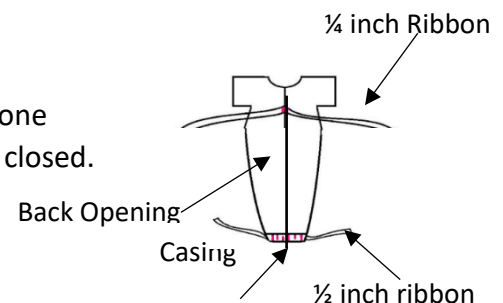
Step #8 Insert 1 Inch Ribbon Through Casing

Take the one-inch ribbon and thread through the casing. Cinch the ribbon so the bottom of the suit closes. Tie the ribbon.



Step #9 Sewing Back Ribbon Tie

On the back side of the dress, about $1\frac{1}{2}$ inches down from the neckline, sew one piece of $\frac{1}{4}$ inch ribbon on the edge each panel. This is to allow the dress to be tied closed.



Step #10 Hand Stitch Buttons

On the front of the vest, hand stitch two buttons in the center.



Step #11 Iron

After the suit is completely sewn, Iron down the side seams to help the dress keep the shape.