



The image shows a pattern piece for a newborn gown back. It is a large, rectangular piece with a curved neckline on the left side. A diagonal line runs from the top right corner towards the bottom right corner of the page.

### Pattern Piece 3B Part A

Newborn Gown Back  
Cut Two Pieces-one each side

**Note:** Pattern Piece 3B Part A needs to be attached with Pattern Piece 3B Part B **before** cutting fabric.

(1/2 in margin at bottom of page)

See tutorial on [angelgownsbyanalane.com](http://angelgownsbyanalane.com) for more information about attaching pattern pieces together.

Pattern Provided By:

---

*Angel Gowns by Analane*

---

[angelgownsbyanalane.com](http://angelgownsbyanalane.com)  
Provo, Utah, USA

## **Pattern Piece 3B Part B**

Newborn Gown Back

Cut Two Pieces-one each side

**Note:** Pattern Piece 3B Part B needs to be attached with Pattern Piece 3B Part A **before** cutting fabric.  
(1/2 in margin at bottom of page)

See tutorial on [angelgownsbyanalane.com](http://angelgownsbyanalane.com) for more information about attaching pattern pieces together.

Pattern Provided By:

---

*Angel Gowns by Analane*

---

[angelgownsbyanalane.com](http://angelgownsbyanalane.com)  
Provo, Utah, USA



### Pattern Piece 3A Part A

Newborn Gown Front  
Cut One on Fold

**Note:** Pattern Piece 3A Part A needs  
to be attached with Pattern  
Piece 3B Part B **before** cutting fabric.  
(1/2 in margin at bottom of page)

See tutorial on  
[angelgownsbyanalane.com](http://angelgownsbyanalane.com) for more  
information about attaching pattern  
pieces together.

Fold Line  
←

Pattern Provided By:

---

*Angel Gowns by Analane*

---

[angelgownsbyanalane.com](http://angelgownsbyanalane.com)  
Provo, Utah, USA

## **Pattern Piece 3A Part B**

New Born Gown Front

Cut One on Fold

Note: Pattern Piece 3B Part B needs to be attached with  
Pattern Piece 3B Part A before cutting fabric.

(1/2 in margin at bottom of page)

See tutorial on [angelgownsbyanalane.com](http://angelgownsbyanalane.com) for more  
information about attaching pattern pieces together.

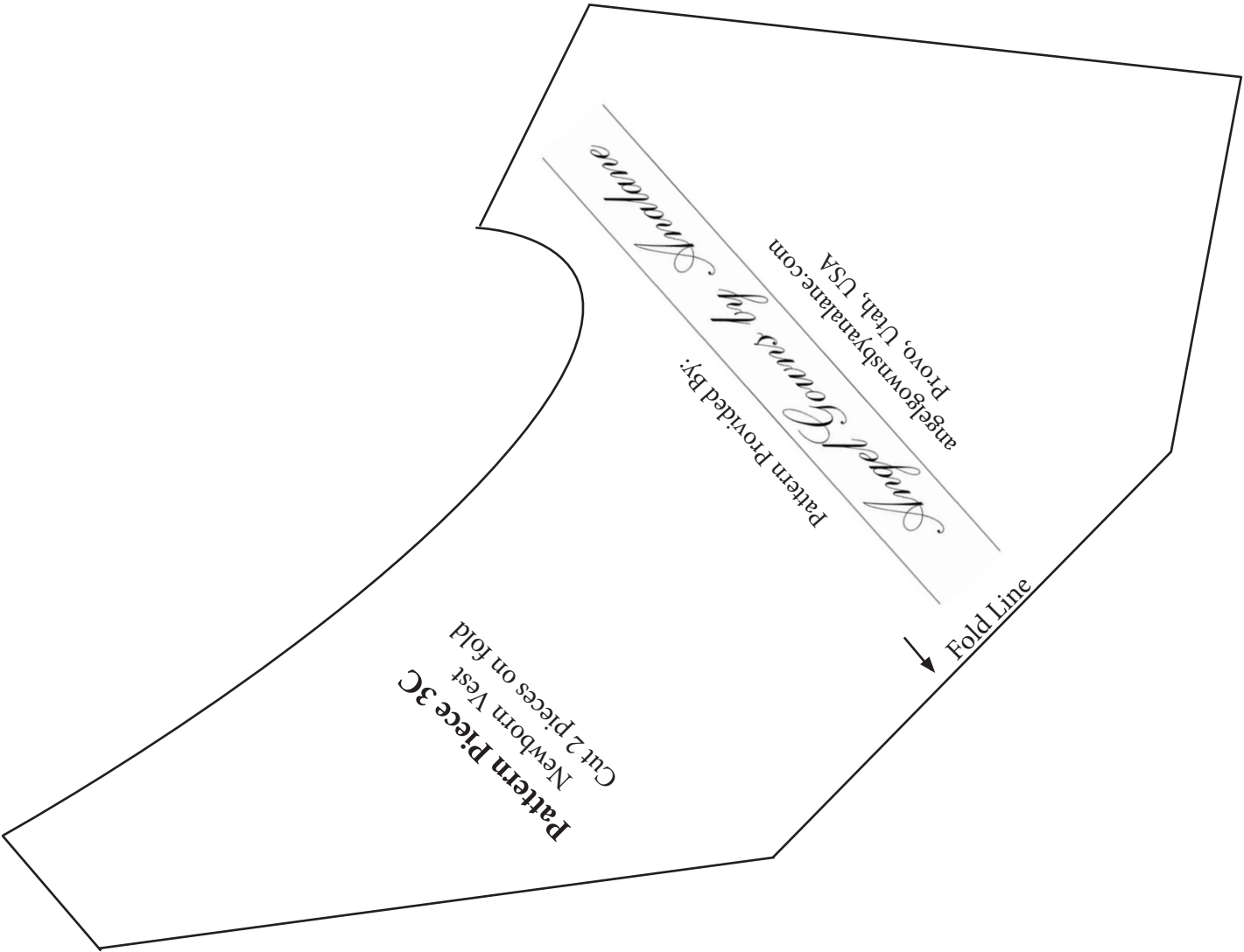
Pattern Provided By:

---

*Angel Gowns by Analane*

---

[angelgownsbyanalane.com](http://angelgownsbyanalane.com)  
Provo, Utah, USA



**Pattern Piece 3C**  
Newborn Vest  
Cut 2 pieces on fold

→ Fold Line

Pattern Provided By:  
*Angel Gowns by Madeline*  
angelgownsbysyranalane.com  
Provo, Utah, USA